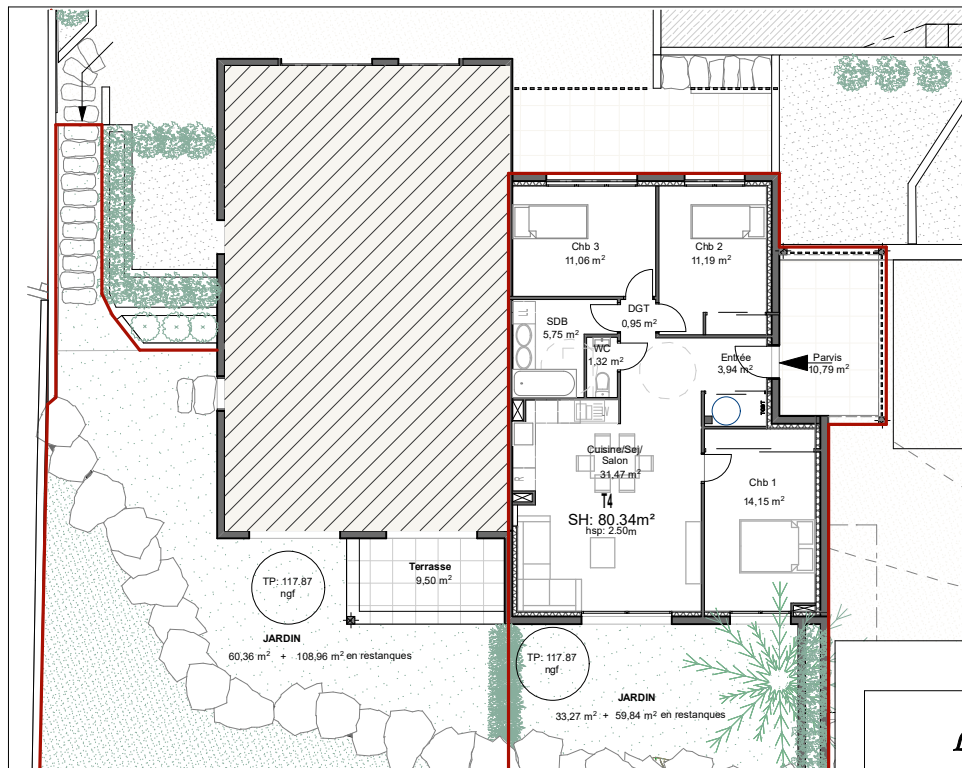




RDJ / APPT 3 / Ech: 1/500



RDJ / APPT 3 / Ech: 1/200



L'écrin des Ramias

RECAPITULATIF DES SURFACES

RDJ APPT 3 - T4

<u>Entrée</u>	3.94m ²
<u>Cuisine / SAM /Salon</u>	31.47m ²
<u>Chambre 1</u>	14.15m ²
<u>Chambre 2</u>	11.19m ²
<u>Chambre 3</u>	11.06m ²
<u>SDB</u>	5.75m ²
<u>Wc</u>	1.32m ²
<u>DGT</u>	0.95m ²
<u>Total surf. intérieures</u>	80.34m²
<u>Parvis</u>	10.79m ²
<u>Jardin</u>	93.11m ²
<u>Parking</u>	2
<u>Local Vélos commun</u>	7.15m ²